



南通瑞泰船务工程有限公司

RUITAI NANTONG SHIPYARD.CO.,LTD



# 目 录

## CONTENTS

01

公 司 简 介

BRIEF INTRODUCTION

02

主要设施设备

MAIN FACILITIES

03

常规修理事例

NORMAL REPAIRS

04

特种船/特种事例

TYPICAL REFERENCE

05

脱硫/压载系统改装

CONVERSION OF SCRUBBER / BWTS

06

合作与投资

COOPERATOR/INVESTMENT



## 总体情况

GENERAL INFORMATION

- 公司成立 ESTABLISHED | Apl., 2008
- 公司运营 STARTING FOR BUSINESS | Dec., 2009
- 公司员工 NUMBER OF STAFF | 280
- 公司劳务人员 NUMBER OF SUBCONTRACTOR | 800
- 公司厂区面积 WORKING AREA | 396,000 M<sup>2</sup>
- 码头岸线 WATER FRONT | 800M
- 年修理/改装能力 REPAIR/CONVERSION CAPACITY  
ANNUALLY | 120 – 150 vessels



## 从上海到公司两小时车程

Two hours by driving from Shanghai to Ruitai Shipyard



## 临近上海、宁波、南通、及张家港等主要港口

Near to port of Shanghai, Ningbo, Nantong & Zhangjiagang



## 距长江口约65海里

65 miles from CJK pilot station to Ruitai Shipyard



## 北纬: 32°1.088' 东经: 120°38.228'

North latitude: 32°1.088',  
East Longitude: 120°38.228'



# (鸟瞰图)

AIRSCAPE OF THE COMPANY

南通瑞泰船务工程有限公司  
RUITAI NANTONG SHIPYARD CO.,LTD



➤ 码头岸吊 Shore Crane

40吨70米2台 32吨65米1台

40T\*70M 2 sets, 32T\*65M 1 set.



舾装码头 Outfitting Quay

➤ ( “瑞泰” 坞 ) “Ruitai” dock

Lx B: 200M \* 34M

Lift capacity ( 举力 ) : 13,000T

With crane ( 坞吊 ) : 15T\*2sets



➤ ( “如皋” 坞 ) “Rugao” dock

Lx B: 240M \* 35M

Lift capacity ( 举力 ) : 18,000T With crane ( 坞吊 ) : 50T\*1sets50T\*1sets





岸吊 Shore crane

200吨 1台  
200T\*1set



平板车 Hydraulic flat car

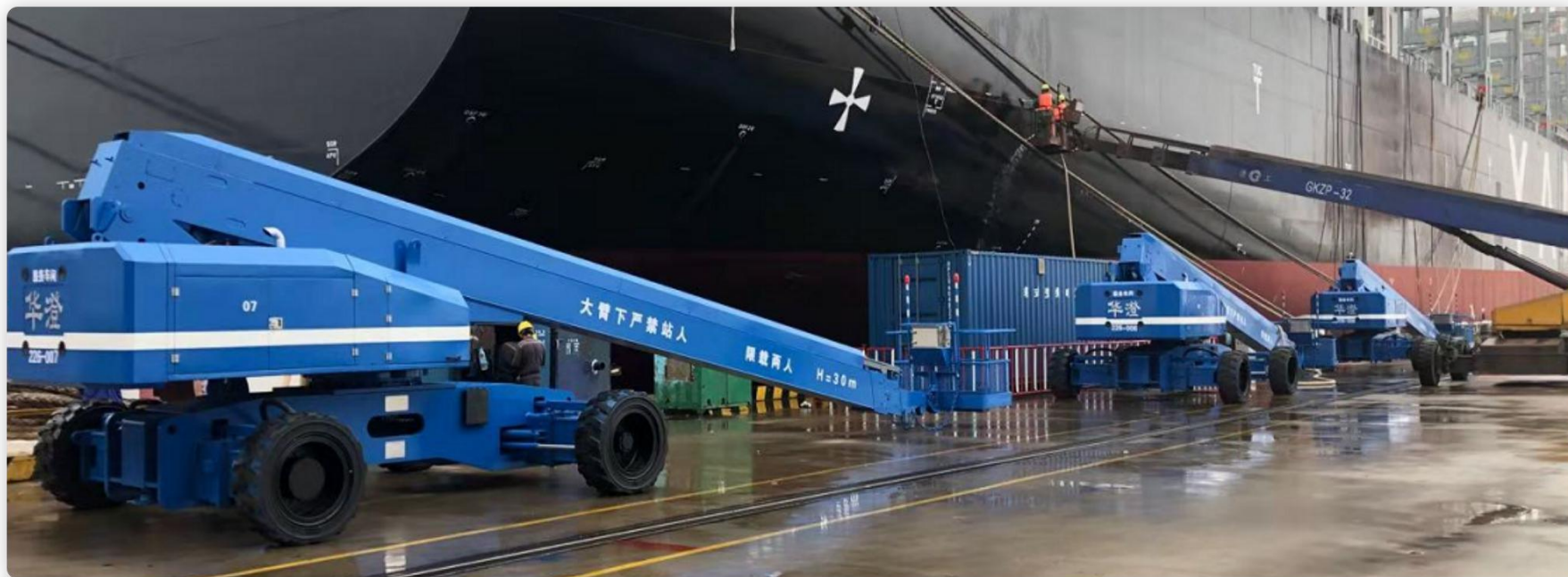
200吨 2台  
200T\*2set



高架车 Cherry picker

40台

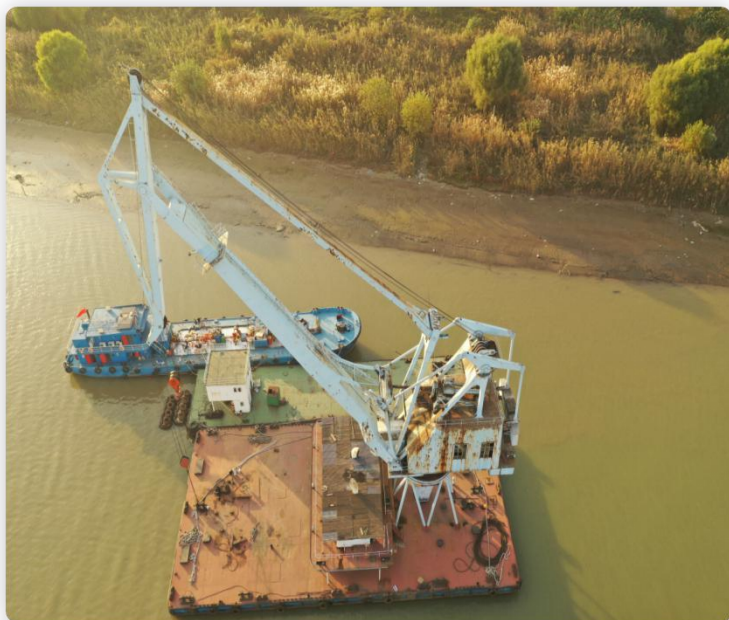
40set



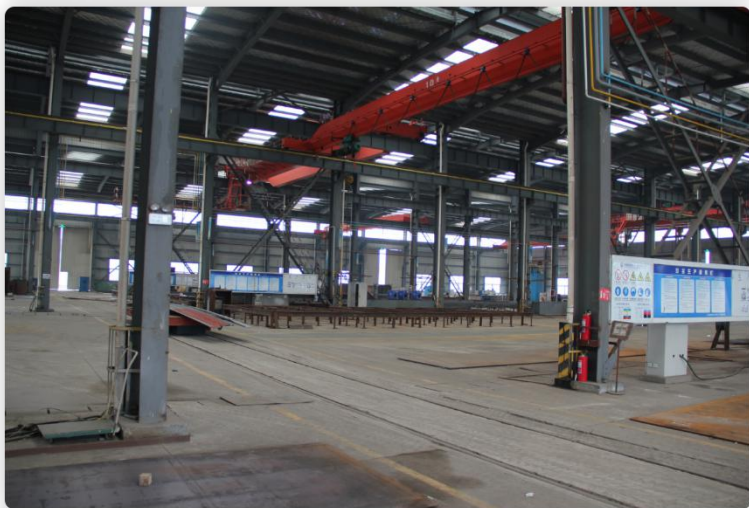
➤ 浮吊 Float Crane

60吨/15吨 27米

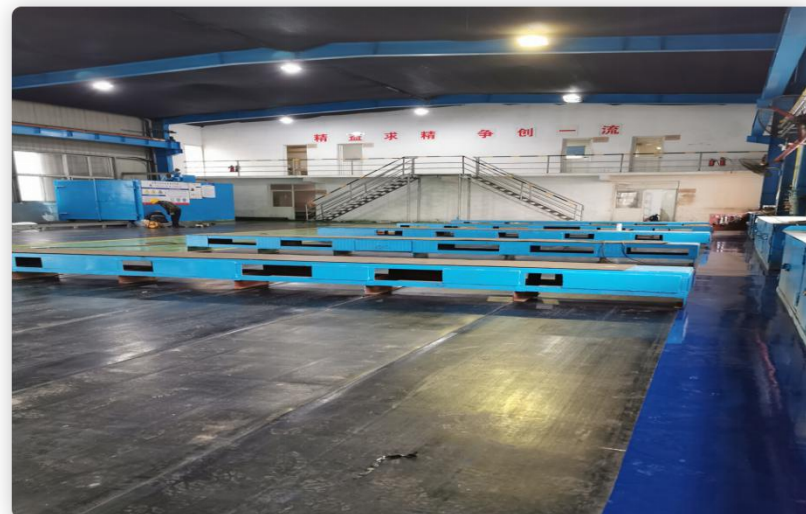
60T/15T 27M













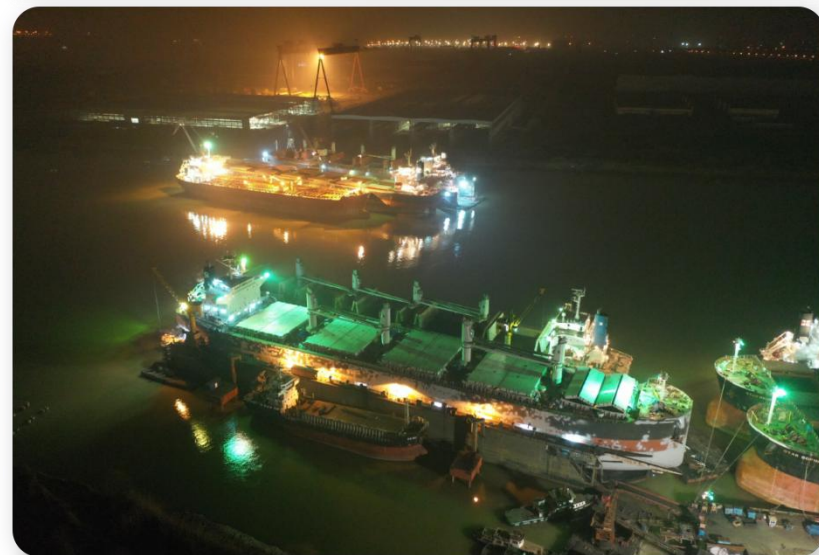
(拖轮：两艘) Tugboat :2 sets





# 常规修理 NORMAL REPAIR

南通瑞泰船务工程有限公司  
RUITAI NANTONG SHIPYARD CO.,LTD







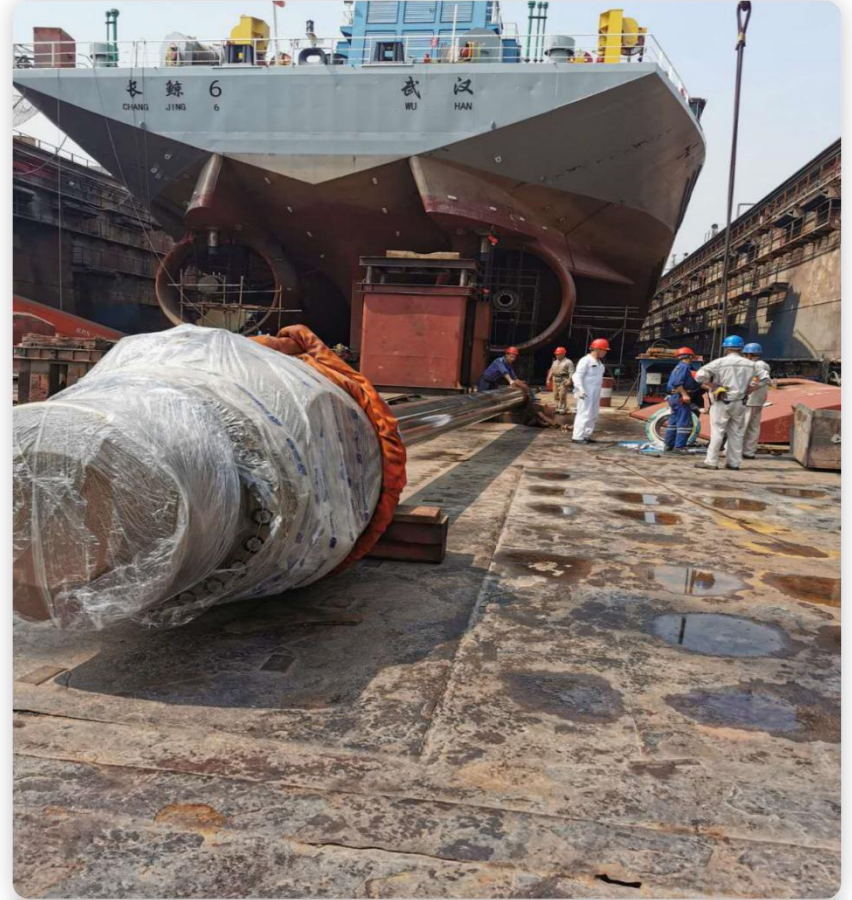


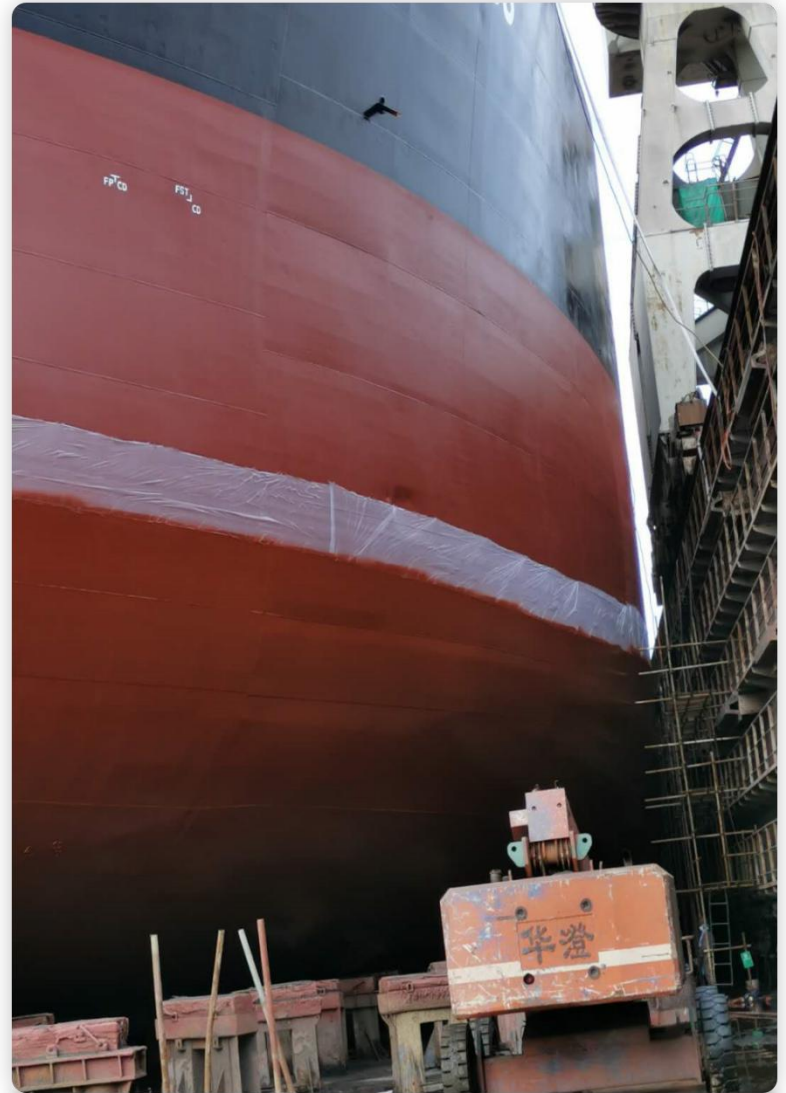
# 常规修理 NORMAL REPAIR



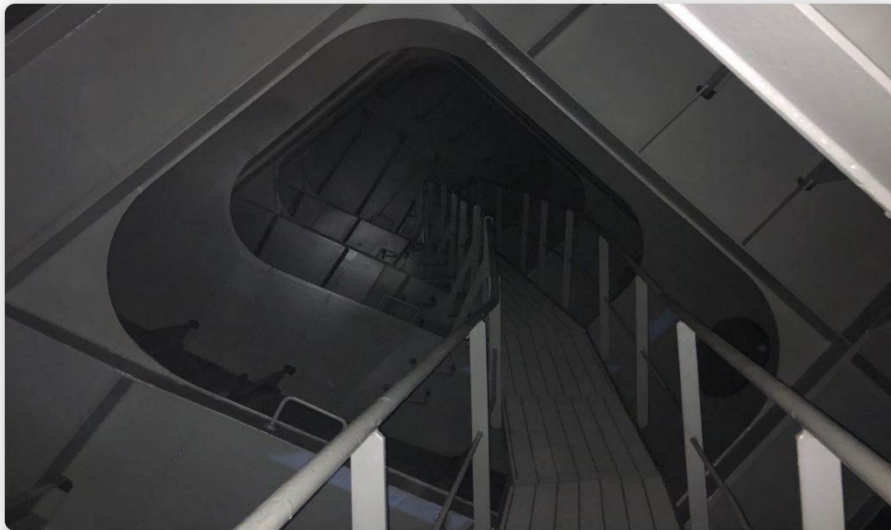




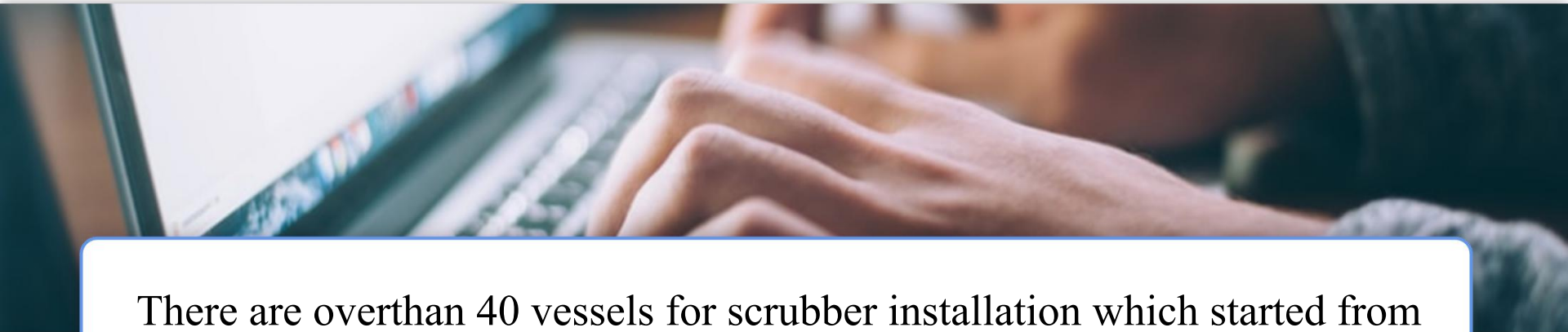






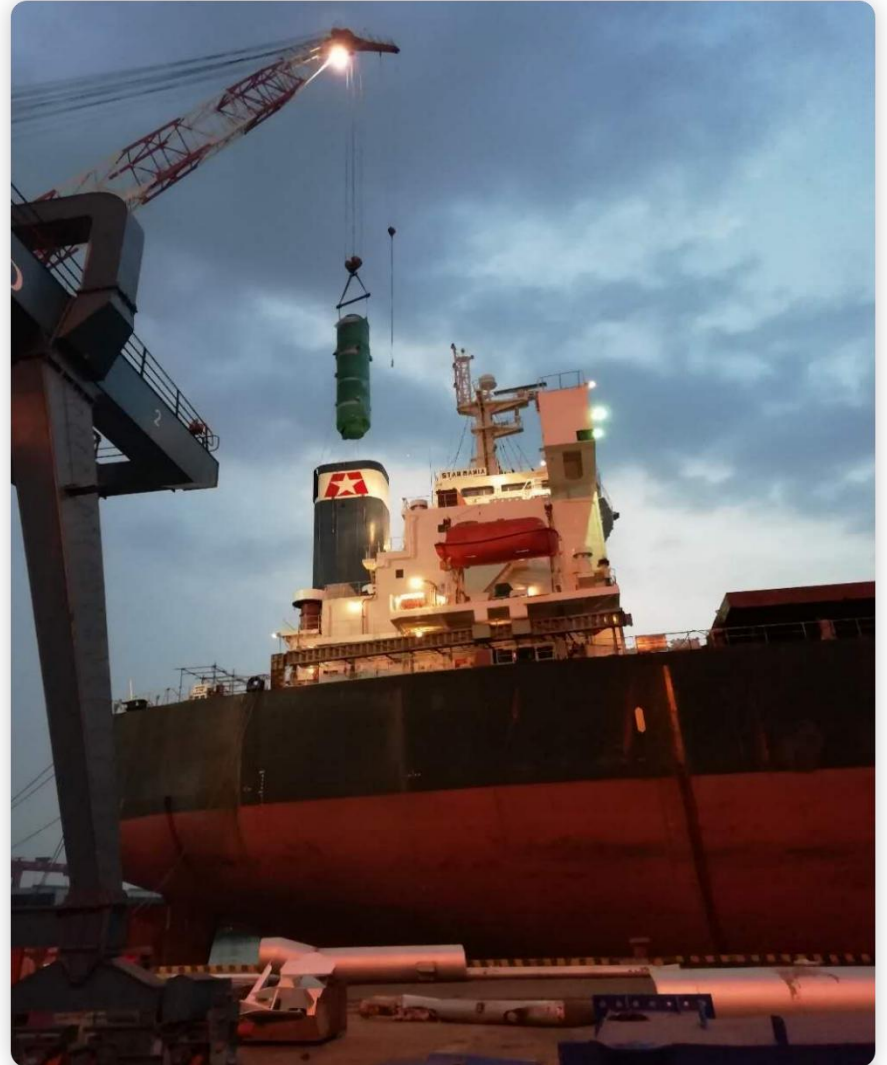


➤ 一. 脱硫设备安装  
Scrubber installation

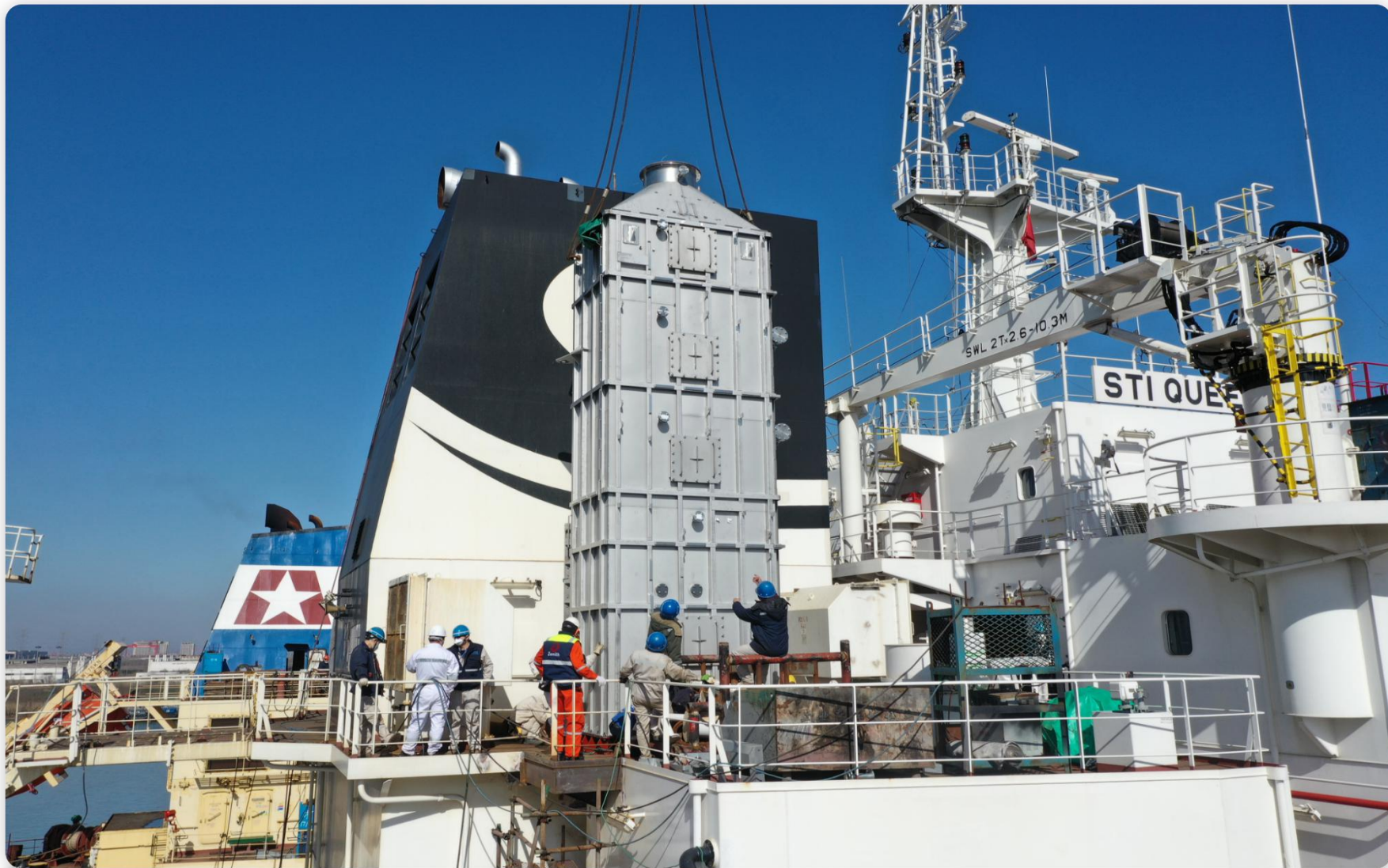


There are overthan 40 vessels for scrubber installation which started from Mar. 2019, annual service period around 30 days. and there are 4 vessels at same time in yard.

**从2019年3月开始共完成超40艘船舶的脱硫设备安装，平均生产周期为30天,另外同时可以有4条在厂**





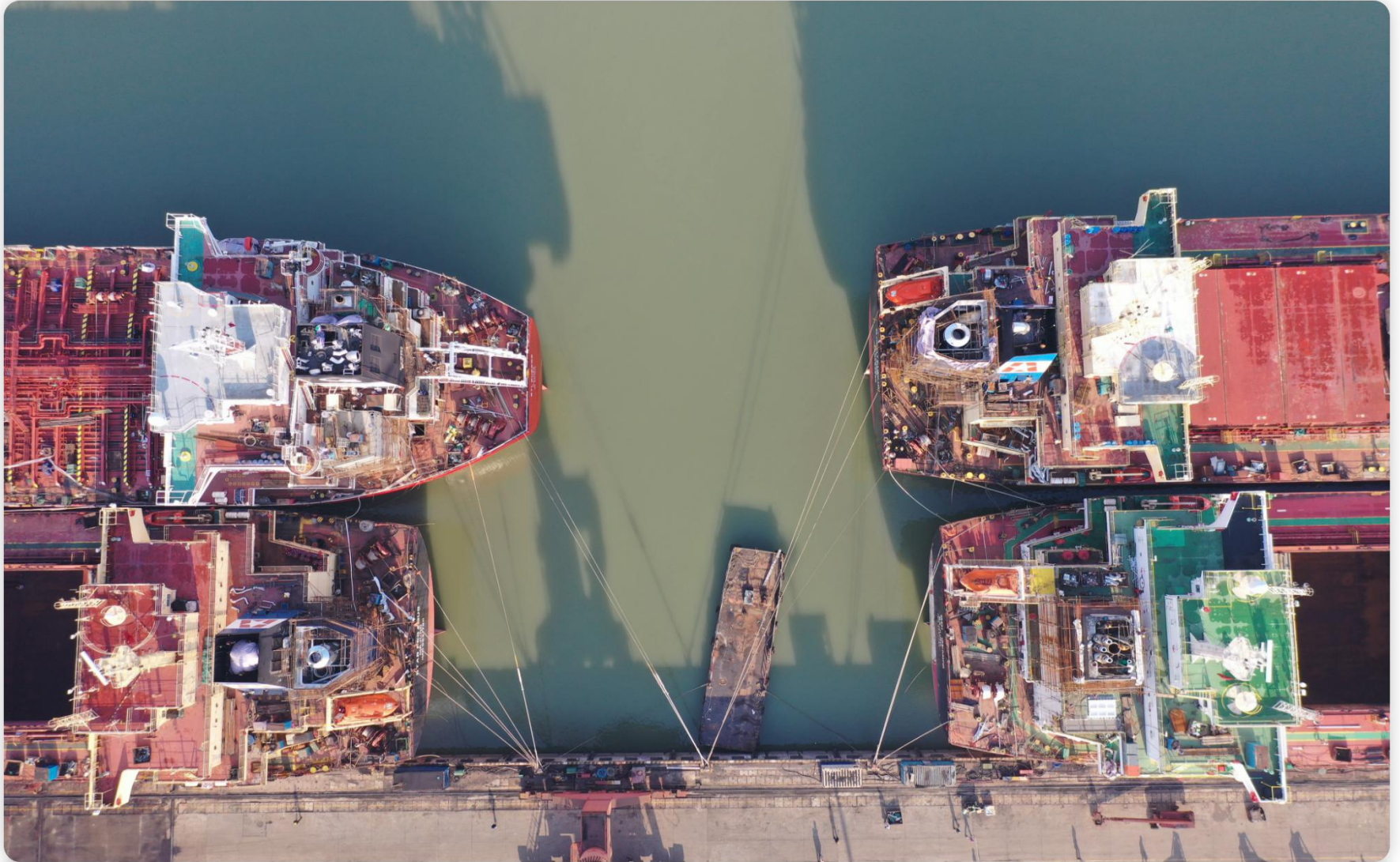












➤ 二. 压载水系统安装  
BWTMS INSTALLATION

从2019年初开始，压载水系统安装已完工超100艘船舶，平均15天

There are total over than 100 vessels for BWTMS installation which started from Begin of 2019 year, annual repair period 15days.

序号	设备厂家
1	ERMA FIRST
2	ALFA LAVAL
3	HEADWAY
4	QINGDAO SUNRUI
5	BLUE OCEAN SHIELD
6	ECOCHLOR
7	TEHCROSS





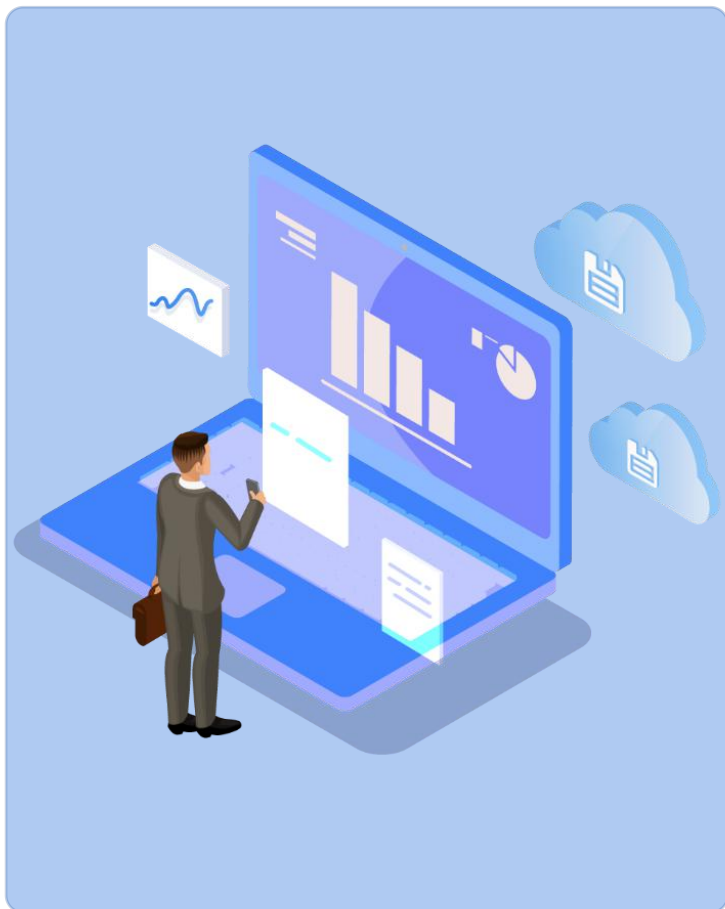
# 过去10年业绩

PERFORMANCE IN PASSED 10 YEARS

 南通瑞泰船务工程有限公司  
RUITAI NANTONG SHIPYARD CO.,LTD

year 年份	total 数量	B/C 散货	C/V 杂货	M/T 油轮	C/T 化学品	Other 其他
<b>2010</b>	75	45	6	12	8	4
<b>2011</b>	80	48	10	10	6	6
<b>2012</b>	83	52	11	9	5	6
<b>2013</b>	78	47	8	11	9	3
<b>2014</b>	85	54	6	12	8	5
<b>2015</b>	82	48	5	11	12	6
<b>2016</b>	98	62	5	11	15	5
<b>2017</b>	106	74	7	7	10	8
<b>2018</b>	103	75	5	8	7	8
<b>2019</b>	126	90	8	15	5	8
<b>2020 (1-10)</b>	120	89	15	8	5	3

## 一. 特种修理及配套服务 Special repair/service



There are a lot of service station for ship equipment, and also there are a lot of spare parts manufactory in Nantong area near yard. All of them have good relationship with us. such as: Turbocharge, Governor, Boiler, Galvanized, Recondition and electrical or electronic equipment etc. They can arrive at yard within 1 hour.

**在公司周边南通地区，有许多船舶配套服务站及备件厂家，与我们有密切关系。如增压器，调速器，锅炉，电镀，翻新及电器电子方面等，均在1小时服务圈内**

## 二. 油化船清仓及航修服务

Tanker cleaning & Voyage repair

### 南通锦祥船舶服务有限公司

01

Nantong Jinxiang  
Ship Service Co Ltd

Approved by Local Government, the company service for product tanker cleaning, oily water receival, oily sludge disposal, and garbage disposal; ship provision supply and local port emergency save etc.

南通锦祥船舶服务有限公司为地方政府认可的，具有在南通水域对油轮进行清仓，油污水、油泥接收/处理，船舶生活垃圾/污水接收处理，伙食物料供应的资质，同时为地方港口应急救援等服务。

### 南通泰达船务工程有限公司

02

Nantong Taida  
Ship Engineering Co Ltd

Main business is voyage repair at all chinese ports, also provision and spare parts supply.

南通泰达船务工程有限公司主营业务为船舶在国内各大港口的航修，物料及伙食供应等。



谢谢观看

THANKS

瑞泰  
RUI TAI

